

# English Notebook



- Easy to read definitions
- Perfect for homework



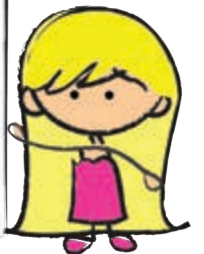
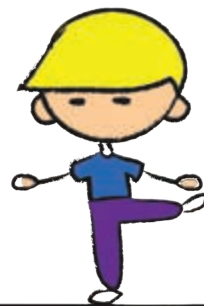
AMERICAN NATIONAL ELT

gle ant cow bell fing  
ny muscle star bulb  
dow wing wire thro  
cket egg engine eye  
e bath farm bee be  
throat pipe screw cart  
eed needle drain ear  
ress skin egg neck s  
hoe plane cake shirt  
thumb bed ticket shee  
worm drop stem butto  
hip plate drawer cam  
card stick carriage bel  
station plow knee libra  
knife leg star horse st  
ospital station knot le  
ouse stick line lock m  
atch lip cheese spor  
nkey chain spoon c

1

American National ELT Newyork LTD. izniyle  
İmtiyaz Sahibi  
American National ELT Yayıncılık Eğitim ve Danışmanlık LTD.ŞTİ.

Adres : Çağlayan Mh. 2053 Sk. No:10 D:1  
Muratpaşa / ANTALYA  
e-mail: siparis@anelt.org



Name: .....

Surname: .....

School: .....

Class: .....

Birth Date: .....

English Teacher: .....

# Requests



Can I help you?

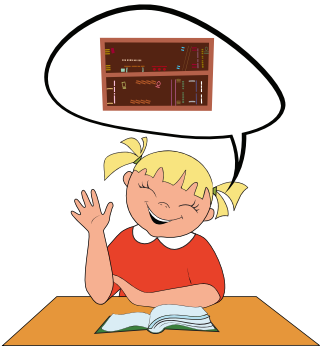
.....

.....

.....

.....

.....



Can I go to my bookcase?

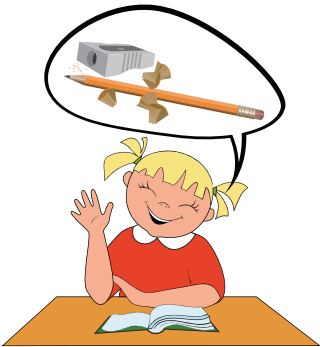
.....

.....

.....

.....

.....



Can I sharpen my pencil?

.....

.....

.....

.....

.....



Can I go to the toilet?

.....

.....

.....

.....

.....

# Classroom Language



sit down



stand up

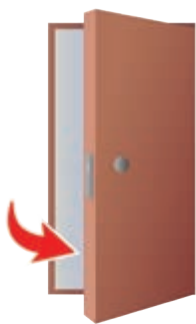


listen



look

# Classroom Language



open

.....

.....

.....

.....

.....

.....



close

.....

.....

.....

.....

.....

.....



point

.....

.....

.....

.....

.....

.....



be quiet

.....

.....

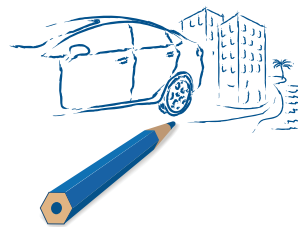
.....

.....

.....

.....

# Classroom Language



draw



colour



cut



sing

# Notes

A series of horizontal dotted lines for writing notes.







AMERICAN NATIONAL ELT

[www.anelt.org](http://www.anelt.org)